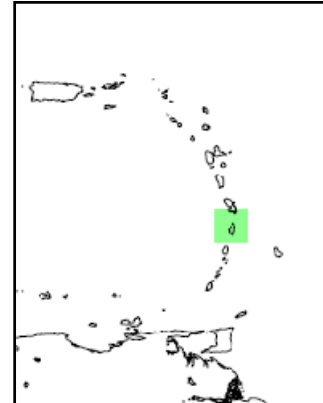


St Lucia

C. McSweeney¹, M. New^{1,2} and G. Lizcano¹

1. School of Geography and Environment, University of Oxford.
2. Tyndall Centre for Climate Change Research

<http://country-profiles.geog.ox.ac.uk>



General Climate

St Lucia is one of the southern Caribbean Islands, located at 14°N, and experiences the year-round warm, humid conditions associated with the Tropics. Mean temperature in summer months is around 27°C, dropping by only a degree or so to 25-26°C in the cooler months of December to February. The wet season occurs through May to October, during which the island receives up to 300mm per month.

Inter-annual variability in the Southern Caribbean climate is influenced strongly the El Niño Southern Oscillation (ENSO). El Niño episodes bring warmer and drier than average conditions between June and August and La Niña episodes bring colder and wetter conditions at this time. St Lucia lies on the southern edge of the Atlantic hurricane belt and is rarely, but occasionally, affected by hurricanes which occur throughout August, September and October.

Recent Climate Trends

Temperature

- Mean annual temperature in St Lucia has increased by around 0.7°C since 1960, at an average rate of 0.16°C per decade.
- There is insufficient daily observational data to identify trends in daily temperature extremes.

Precipitation

- Mean rainfall over St Lucia has increased in SON, by 16.1 per month (6.1%) per decade since 1960, but this increase is not statistically significant. This increase is offset partially by decreases of around 9.0mm per month (3.2%) per decade in JJA.

GCM Projections of Future Climate

Temperature

- The mean annual temperature is projected to increase by 0.5 to 2.1°C by the 2060s, and 1.0 to 3.6 degrees by the 2090s. The range of projections by the 2090s under any one emissions scenario is around 1-2°C. The projected rate of warming is similar throughout the year, but a little more rapid in the colder seasons DJF and SON.
- All projections indicate substantial increases in the frequency of days and nights that are considered 'hot'¹ in current climate.
 - Annually, projections indicate that 'hot' days will occur on 28-67% of days by the 2060s, and 37-100% of days by the 2090s.
 - Nights that are considered 'hot' for the annual climate of 1970-99 are projected to occur on 28-68% of nights by the 2060s and 37-99% of nights by the 2090s. Nights that are hot for each season are projected to increase most rapidly in SON, occurring on 79-100% of nights in every season by the 2090s.
- All projections indicate decreases in the frequency of days and nights that are considered 'cold'² in current climate. These events do not occur at all by the 2060s in projections from most of the models.

Precipitation

- Projections of mean annual rainfall from different models in the ensemble are broadly consistent in indicating decreases in rainfall for St Lucia. Ensemble median values for all seasons are negative. Annual projections vary between -56% and +15% by the 2090s with ensemble median values of -10 to -22%.
- The proportion of total rainfall that falls in heavy³ events decreases in most model projections, changing by -26% to +6% by the 2090s.
- Maximum 1- and 5-day rainfalls tend to decrease in model projections, with 5-day maxima changing by -31 to +13mm by the 2090s.

¹ 'Hot' day or 'hot' night is defined by the temperature exceeded on 10% of days or nights in current climate of that region and season.

² 'Cold' days or 'cold' nights are defined as the temperature below which 10% of days or nights are recorded in current climate of that region or season.

³ A 'Heavy' event is defined as a daily rainfall total which exceeds the threshold that is exceeded on 5% of rainy days in current the climate of that region and season.

Additional Regional Climate Change Information

- Model simulations show wide disagreements in projected changes in the amplitude of future El Niño events, contributing to uncertainty in future climate variability in projections for this region.
- The Caribbean islands are vulnerable to sea-level rise. Sea-level in this region is projected by climate models to rise by the following levels⁴ by the 2090s, relative to 1980-1999 sea-level:
 - 0.13 to 0.43m under SRES B1
 - 0.16 to 0.53m under SRES A1B
 - 0.18 to 0.56m under SRES A2
- For further information see Christensen *et al.* (2007) IPCC Working Group I Report: '*The Physical Science Basis*', Chapter 11 (*Regional Climate projections*): Sections 11.6 (*South and Central America*), and 11.9 (*Small Islands*).

⁴ Taken from the IPCC Working group I (*The Physical Science Basis*): Chapter 10 (Global Climate Projections) (Meehl *et al.*, 2007). Regional sea-level projections are estimated by applying regional adjustments (Fig 10.32, p813) to projected global mean sea-level rise from 14 AR4 models.

Data Summary

	Observed Mean 1970-99	Observed Trend 1960-2006	Projected changes by the 2030s			Projected changes by the 2060s			Projected changes by the 2090s			
			Min	Median	Max	Min	Median	Max	Min	Median	Max	
Temperature												
	(°C)	(change in °C per decade)		Change in °C			Change in °C			Change in °C		
Annual	26.4	0.16*	A2	0.7	0.9	1.0	1.3	1.7	2.1	2.3	2.6	3.6
			A1B	0.5	1.0	1.2	0.8	1.7	2.0	1.3	2.2	3.2
			B1	0.3	0.8	1.0	0.5	1.2	1.6	1.0	1.5	2.1
DJF	25.3	0.13*	A2	0.7	0.9	1.0	1.3	1.7	2.2	2.3	2.7	3.7
			A1B	0.5	0.9	1.3	0.8	1.7	2.1	1.3	2.3	3.2
			B1	0.3	0.8	1.1	0.5	1.2	1.6	0.9	1.5	2.1
MAM	26	0.14*	A2	0.6	0.9	1.0	1.2	1.6	2.1	2.2	2.5	3.6
			A1B	0.4	0.8	1.2	0.7	1.6	2.0	1.2	2.2	2.9
			B1	0.2	0.8	1.0	0.4	1.2	1.6	0.9	1.5	1.9
JJA	27.2	0.19*	A2	0.6	0.9	1.1	1.1	1.8	2.0	2.1	2.5	3.4
			A1B	0.4	1.0	1.1	0.8	1.7	2.1	1.3	2.1	3.3
			B1	0.2	0.8	1.1	0.4	1.2	1.5	0.9	1.5	2.1
SON	27	0.18*	A2	0.7	1.0	1.2	1.4	1.8	2.2	2.3	2.8	3.8
			A1B	0.6	1.0	1.3	1.0	1.7	2.1	1.6	2.2	3.4
			B1	0.4	0.8	1.1	0.6	1.3	1.5	1.1	1.5	2.2
Precipitation												
	(mm per month)	(change in mm per decade)		Change in mm per month			Change in mm per month			Change in mm per month		
Annual	179.2	2.5	A2	-13	-6	9	-21	-7	5	-32	-16	4
			A1B	-11	-3	4	-21	-8	4	-27	-12	5
			B1	-14	-3	10	-19	-3	1	-24	-8	9
DJF	125.6	4.0	A2	-5	-1	2	-7	-2	1	-11	-2	4
			A1B	-10	-1	9	-8	-1	4	-13	-2	2
			B1	-8	-2	7	-6	-2	3	-6	-1	7
MAM	105.3	-0.5	A2	-12	-1	5	-10	0	16	-24	-2	8
			A1B	-10	0	4	-17	-1	6	-19	0	5
			B1	-4	0	8	-17	0	1	-12	0	6
JJA	219.3	-9.0	A2	-31	-11	5	-39	-15	15	-77	-26	10
			A1B	-34	-13	12	-40	-21	1	-56	-26	13
			B1	-25	-6	18	-39	-14	8	-42	-16	21
SON	265.4	16.1	A2	-24	-5	26	-43	-9	15	-60	-13	7
			A1B	-18	6	22	-44	-9	11	-61	-14	17
			B1	-27	-4	23	-39	-4	6	-57	-8	13
Precipitation (%)												
	(mm per month)	(change in % per decade)		% Change			% Change			% Change		
Annual	179.2	1.4	A2	-24	-11	10	-39	-12	10	-56	-22	8
			A1B	-22	-3	8	-40	-13	7	-51	-16	9
			B1	-25	-6	18	-36	-7	2	-45	-10	15
DJF	125.6	3.2	A2	-19	-3	9	-29	-6	8	-38	-6	13
			A1B	-25	-3	48	-19	-7	8	-36	-4	14
			B1	-29	-4	25	-25	-5	13	-17	-5	24
MAM	105.3	-0.4	A2	-30	-3	12	-39	-8	35	-66	-9	10
			A1B	-39	-1	13	-67	-6	11	-74	3	15
			B1	-14	-2	30	-64	-2	10	-47	-2	27
JJA	219.3	-4.1	A2	-37	-14	2	-55	-16	23	-67	-33	14
			A1B	-38	-9	15	-56	-17	2	-63	-27	18
			B1	-36	-5	24	-55	-13	11	-59	-15	26
SON	265.4	6.1	A2	-39	-3	21	-45	-6	12	-63	-16	5
			A1B	-32	4	17	-46	-5	12	-64	-15	17
			B1	-28	-3	28	-41	-4	5	-60	-6	13

	Observed Mean	Observed Trend	Projected changes by the 2030s			Projected changes by the 2060s			Projected changes by the 2090s			
	1970-99	1960-2006	Min	Median	Max	Min	Median	Max	Min	Median	Max	
	% Frequency	Change in frequency per decade				Future % frequency			Future % frequency			
Frequency of Hot Days (TX90p)												
Annual	****	****	A2	****	****	****	38	52	67	54	86	100
			A1B	****	****	****	40	61	67	49	80	94
			B1	****	****	****	28	44	51	37	56	67
DJF	****	****	A2	****	****	****	65	74	96	98	99	100
			A1B	****	****	****	54	79	94	75	98	100
			B1	****	****	****	29	53	76	52	79	95
MAM	****	****	A2	****	****	****	67	78	98	96	99	100
			A1B	****	****	****	57	78	96	86	97	99
			B1	****	****	****	29	49	89	56	81	95
JJA	****	****	A2	****	****	****	57	83	97	86	99	100
			A1B	****	****	****	61	87	94	83	97	99
			B1	****	****	****	36	70	78	55	83	97
SON	****	****	A2	****	****	****	80	91	99	97	99	100
			A1B	****	****	****	81	93	99	96	98	99
			B1	****	****	****	55	79	95	74	89	99
Frequency of Hot Nights (TN90p)												
Annual	****	****	A2	****	****	****	39	52	68	53	83	99
			A1B	****	****	****	40	60	65	50	77	92
			B1	****	****	****	28	49	53	37	55	71
DJF	****	****	A2	****	****	****	59	69	95	96	99	100
			A1B	****	****	****	53	77	93	72	97	100
			B1	****	****	****	28	57	74	51	74	93
MAM	****	****	A2	****	****	****	64	77	97	93	99	100
			A1B	****	****	****	58	79	96	84	97	99
			B1	****	****	****	30	54	87	56	81	95
JJA	****	****	A2	****	****	****	53	83	98	85	99	100
			A1B	****	****	****	62	88	96	83	97	99
			B1	****	****	****	32	71	85	55	82	98
SON	****	****	A2	****	****	****	80	93	99	98	99	100
			A1B	****	****	****	82	93	99	97	99	100
			B1	****	****	****	58	79	97	74	97	99
Frequency of Cold Days (TX10p)												
Annual	****	****	A2	****	****	****	0	0	0	0	0	0
			A1B	****	****	****	0	0	0	0	0	0
			B1	****	****	****	0	0	1	0	0	0
DJF	****	****	A2	****	****	****	0	0	0	0	0	0
			A1B	****	****	****	0	0	0	0	0	0
			B1	****	****	****	0	0	0	0	0	0
MAM	****	****	A2	****	****	****	0	0	0	0	0	0
			A1B	****	****	****	0	0	0	0	0	0
			B1	****	****	****	0	0	0	0	0	0
JJA	****	****	A2	****	****	****	0	0	0	0	0	0
			A1B	****	****	****	0	0	1	0	0	0
			B1	****	****	****	0	0	6	0	0	1
SON	****	****	A2	****	****	****	0	0	0	0	0	0
			A1B	****	****	****	0	0	0	0	0	0
			B1	****	****	****	0	0	1	0	0	0
Frequency of Cold Nights (TN10p)												
Annual	****	****	A2	****	****	****	0	0	0	0	0	0
			A1B	****	****	****	0	0	0	0	0	0
			B1	****	****	****	0	0	2	0	0	0
DJF	****	****	A2	****	****	****	0	0	0	0	0	0
			A1B	****	****	****	0	0	0	0	0	0
			B1	****	****	****	0	0	1	0	0	0
MAM	****	****	A2	****	****	****	0	0	0	0	0	0
			A1B	****	****	****	0	0	0	0	0	0
			B1	****	****	****	0	0	1	0	0	0
JJA	****	****	A2	****	****	****	0	0	0	0	0	0
			A1B	****	****	****	0	0	1	0	0	0
			B1	****	****	****	0	0	7	0	0	2
SON	****	****	A2	****	****	****	0	0	0	0	0	0
			A1B	****	****	****	0	0	0	0	0	0
			B1	****	****	****	0	0	1	0	0	0

	Observed Mean 1970-99	Observed Trend 1960-2006	Projected changes by the 2030s			Projected changes by the 2060s			Projected changes by the 2090s			
			Min	Median	Max	Min	Median	Max	Min	Median	Max	
% total rainfall falling in Heavy Events (R95pct)												
	%	Change in % per decade				Change in %			Change in %			
Annual	****	****	A2	****	****	****	-20	-1	4	-26	-3	6
			A1B	****	****	****	-19	-1	5	-27	-2	4
			B1	****	****	****	-22	-2	5	-25	0	3
DJF	****	****	A2	****	****	****	-13	0	5	-10	-2	5
			A1B	****	****	****	-7	0	4	-16	-2	8
			B1	****	****	****	-13	0	5	-9	-1	5
MAM	****	****	A2	****	****	****	-9	-3	4	-29	-6	5
			A1B	****	****	****	-10	-2	5	-34	-3	5
			B1	****	****	****	-17	-3	2	-12	0	11
JJA	****	****	A2	****	****	****	-25	-3	7	-27	-4	6
			A1B	****	****	****	-23	-4	3	-28	-2	8
			B1	****	****	****	-27	-1	7	-26	0	6
SON	****	****	A2	****	****	****	-11	-1	7	-22	-1	5
			A1B	****	****	****	-22	-3	8	-22	1	8
			B1	****	****	****	-17	-1	6	-18	-2	9
Maximum 1-day rainfall (RX1day)												
	mm	Change in mm per decade				Change in mm			Change in mm			
Annual	****	****	A2	****	****	****	-8	0	2	-11	0	5
			A1B	****	****	****	-7	-1	8	-12	-1	4
			B1	****	****	****	-7	0	9	-10	0	8
DJF	****	****	A2	****	****	****	-3	0	0	-2	0	2
			A1B	****	****	****	-1	0	0	-6	0	1
			B1	****	****	****	-2	0	1	-2	0	3
MAM	****	****	A2	****	****	****	-1	0	3	-5	0	0
			A1B	****	****	****	-2	0	4	-11	0	4
			B1	****	****	****	-6	0	0	-2	0	1
JJA	****	****	A2	****	****	****	-12	0	2	-14	-2	3
			A1B	****	****	****	-10	-1	1	-15	-2	3
			B1	****	****	****	-13	0	5	-12	0	2
SON	****	****	A2	****	****	****	-6	-1	2	-8	-1	6
			A1B	****	****	****	-5	-1	8	-8	-1	5
			B1	****	****	****	-4	0	5	-7	-1	9
Maximum 5-day Rainfall (RX5day)												
	mm	Change in mm per decade				Change in mm			Change in mm			
Annual	****	****	A2	****	****	****	-17	-1	7	-31	-9	13
			A1B	****	****	****	-20	-5	7	-30	-6	9
			B1	****	****	****	-21	-2	13	-29	-2	8
DJF	****	****	A2	****	****	****	-7	-1	5	-8	-2	7
			A1B	****	****	****	-7	0	5	-12	-2	2
			B1	****	****	****	-7	0	6	-7	-1	15
MAM	****	****	A2	****	****	****	-4	0	9	-16	-1	2
			A1B	****	****	****	-5	0	9	-20	0	14
			B1	****	****	****	-13	-1	0	-7	0	3
JJA	****	****	A2	****	****	****	-28	-4	10	-32	-7	7
			A1B	****	****	****	-24	-5	4	-32	-8	8
			B1	****	****	****	-28	-4	9	-29	-7	6
SON	****	****	A2	****	****	****	-13	-1	7	-26	-5	16
			A1B	****	****	****	-18	-5	19	-27	-1	9
			B1	****	****	****	-16	-1	7	-25	-5	16

* indicates trend is statistically significant at 95% confidence

**** indicates data are not available

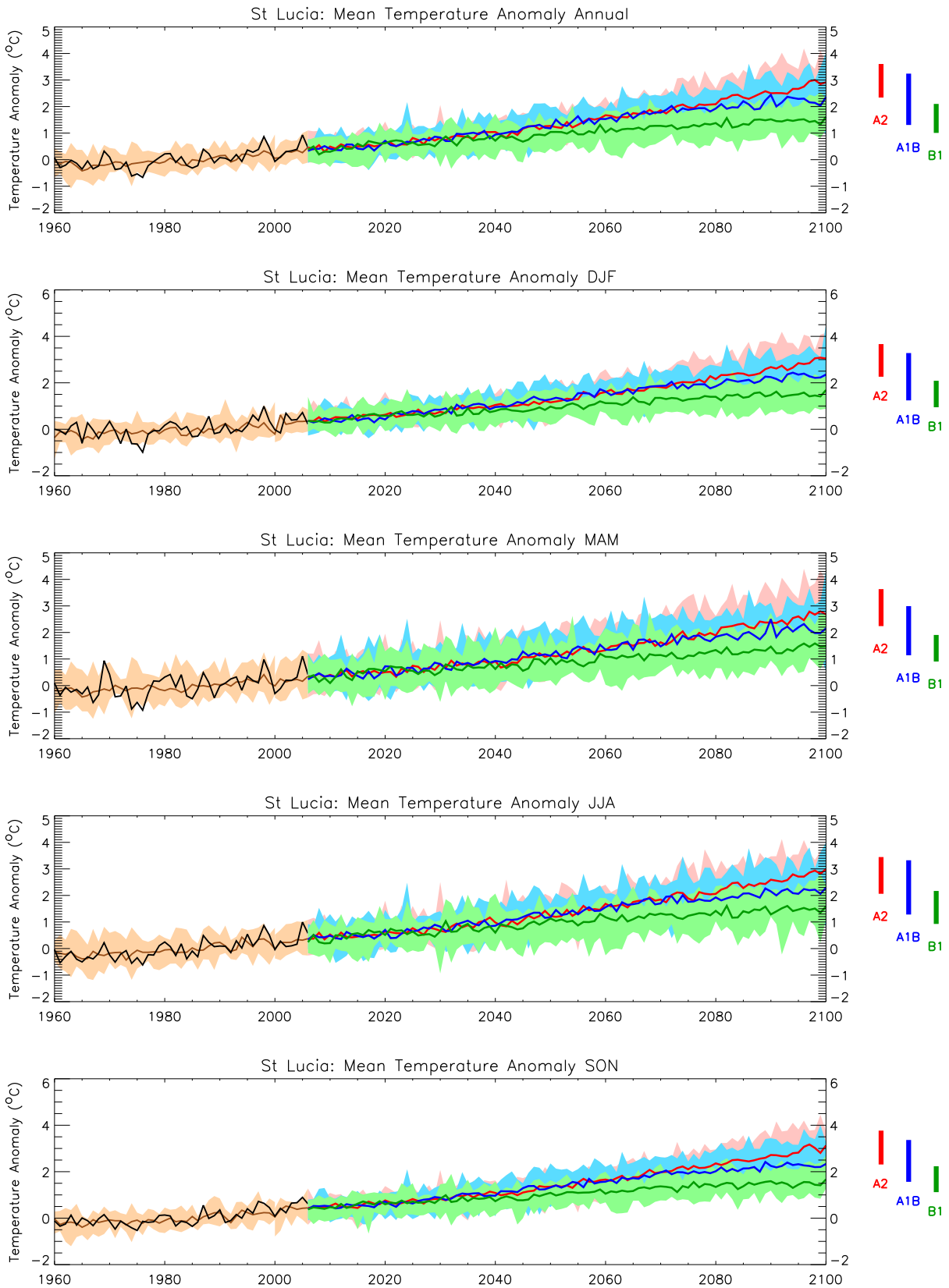


Figure 1: Trends in annual and seasonal mean temperature for the recent past and projected future. All values shown are anomalies, relative to the 1970-1999 mean climate. Black curves show the mean of observed data from 1960 to 2006, Brown curves show the median (solid line) and range (shading) of model simulations of recent climate across an ensemble of 15 models. Coloured lines from 2006 onwards show the median (solid line) and range (shading) of the ensemble projections of climate under three emissions scenarios. Coloured bars on the right-hand side of the projections summarise the range of mean 2090-2100 climates simulated by the 15 models for each emissions scenario.

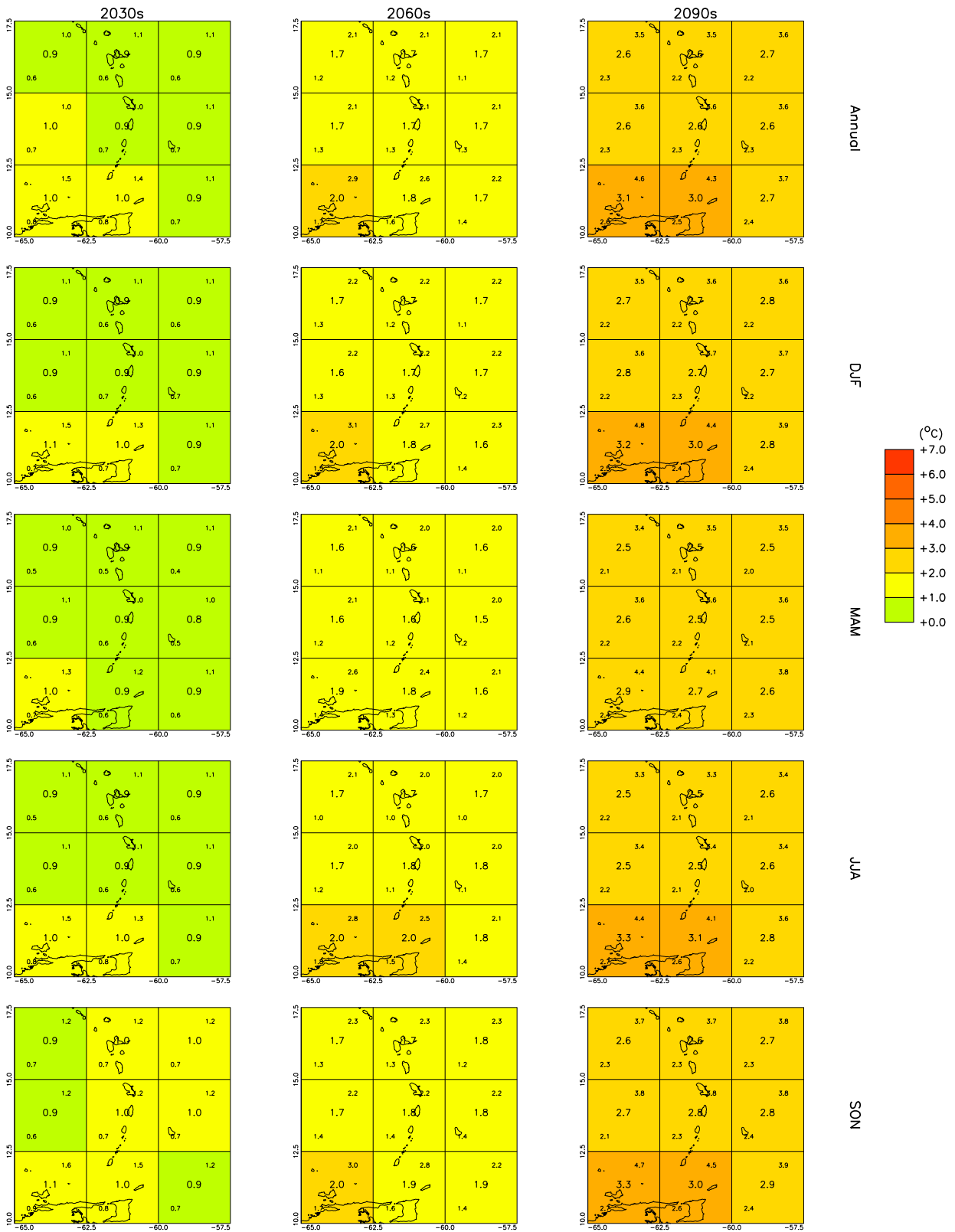


Figure 2: Spatial patterns of projected change in mean annual and seasonal temperature for 10-year periods in the future under the SRES A2 scenario. All values are anomalies relative to the mean climate of 1970-1999. In each grid box, the central value gives the ensemble median and the values in the upper and lower corners give the ensemble maximum and minimum.

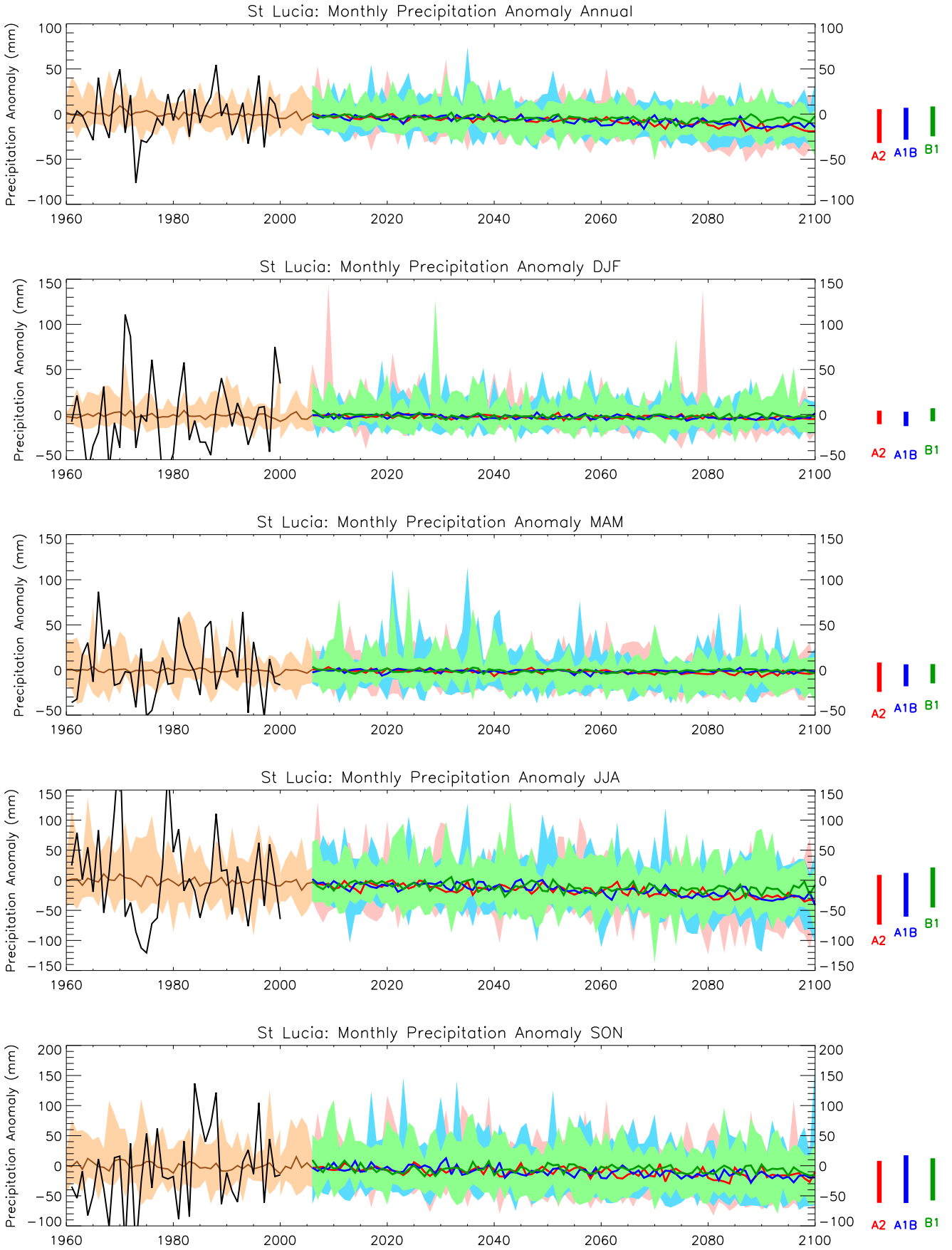


Figure 3: Trends in monthly precipitation for the recent past and projected future. All values shown are anomalies, relative to the 1970-1999 mean climate. See Figure 1 for details.

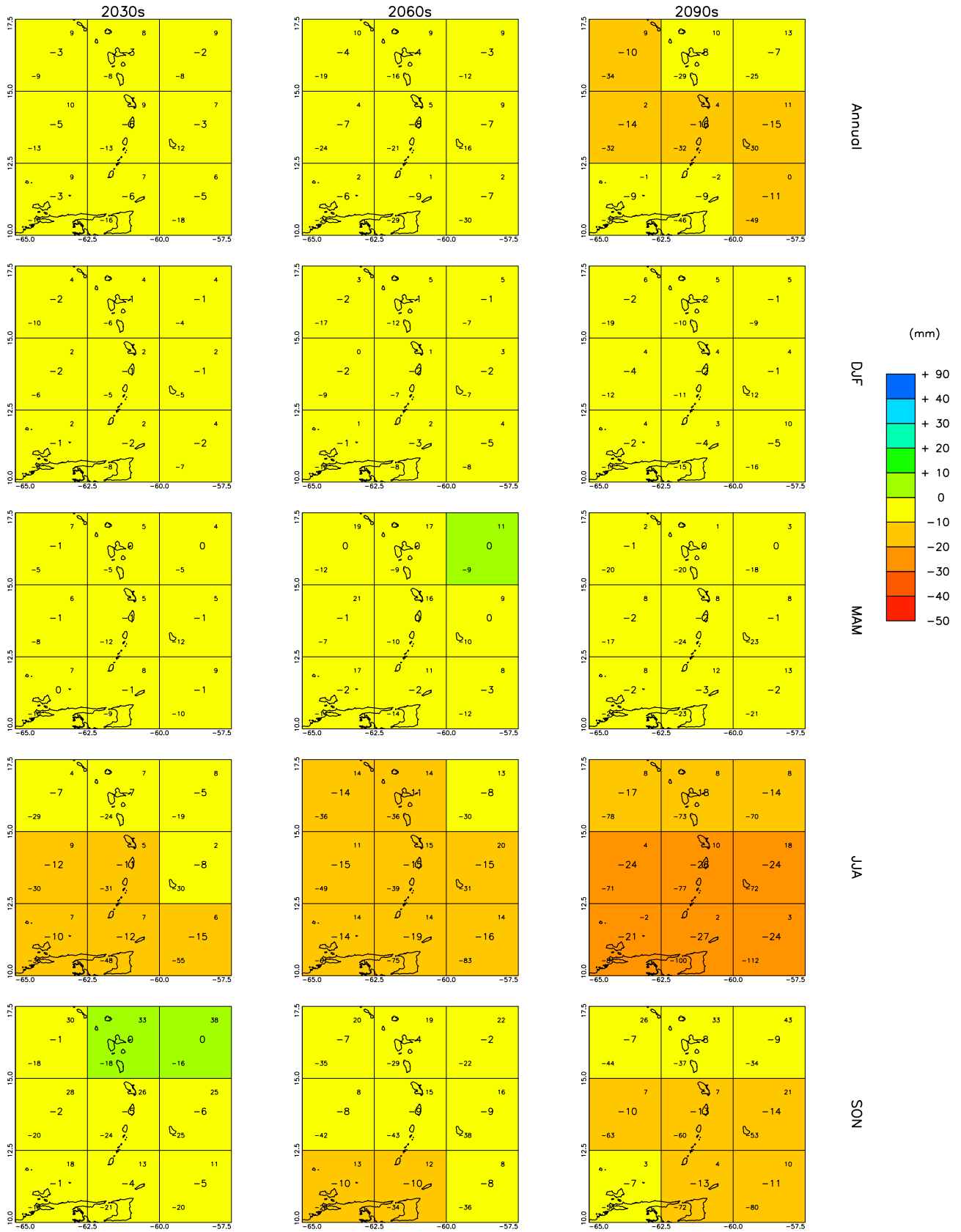


Figure 4: Spatial patterns of projected change in monthly precipitation for 10-year periods in the future under the SRES A2 scenario. All values are anomalies relative to the mean climate of 1970-1999. See Figure 2 for details.

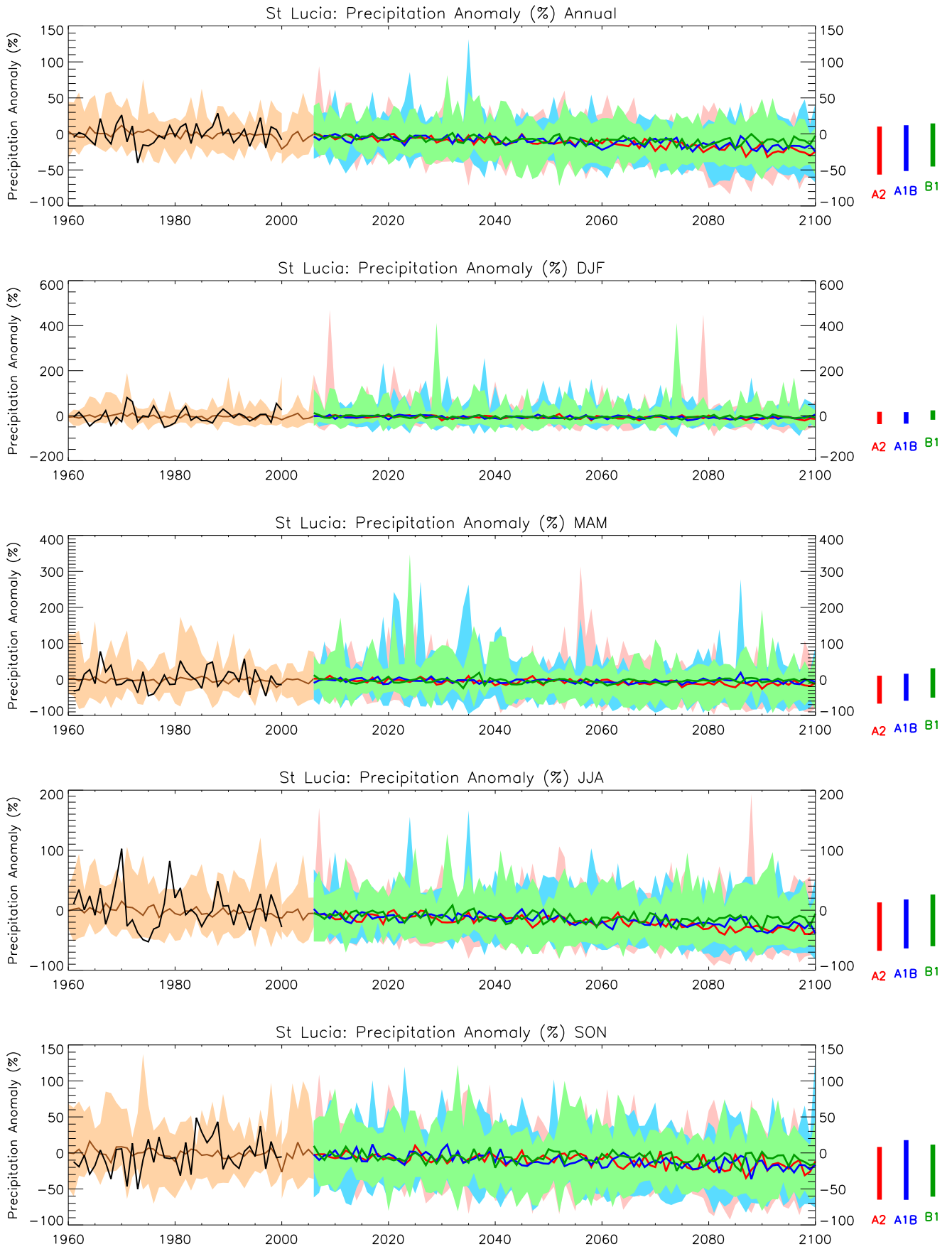


Figure 5: Trends in monthly precipitation for the recent past and projected future. All values shown are percentage anomalies, relative to the 1970-1999 mean climate. See Figure 1 for details.

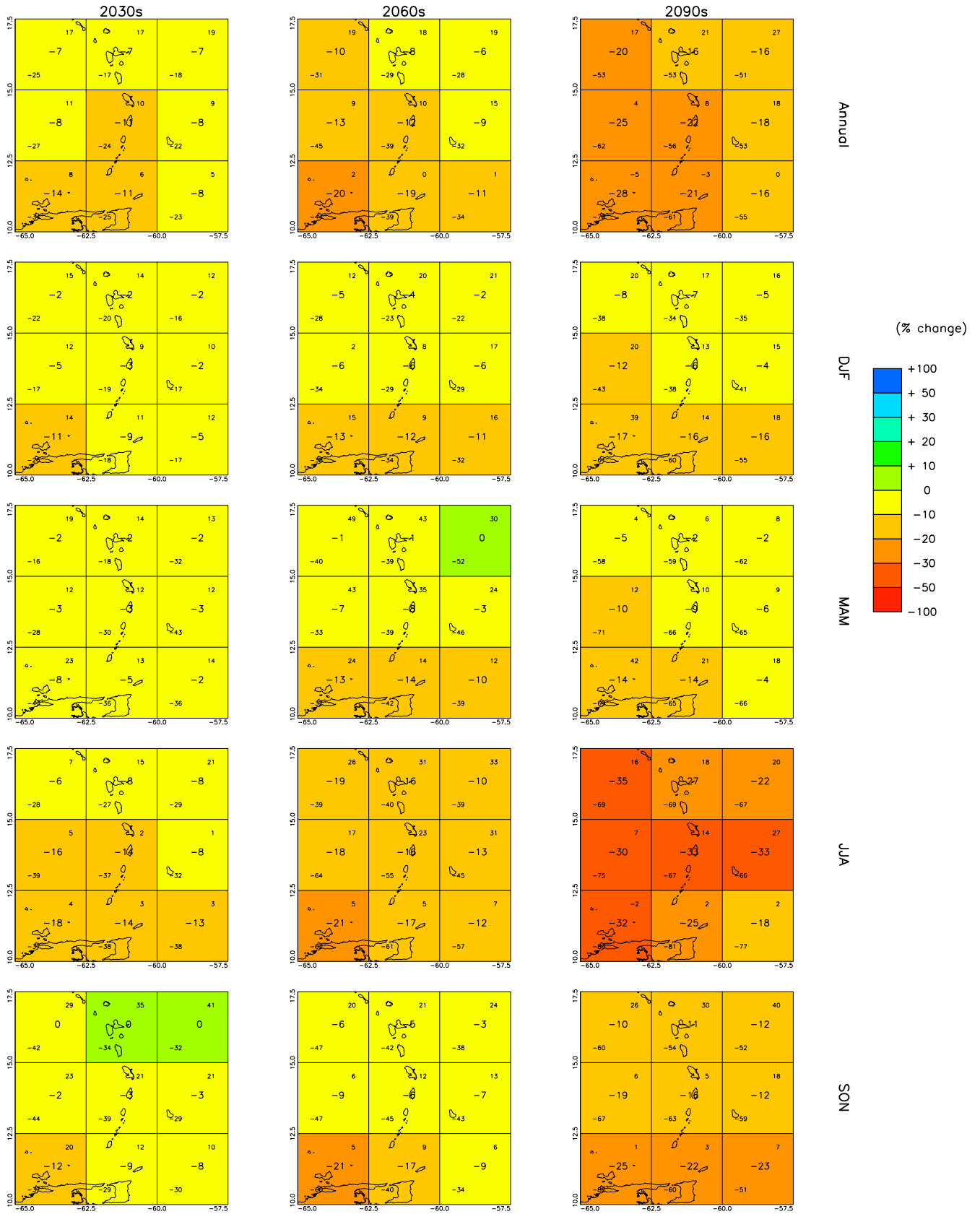


Figure 6: Spatial patterns of projected change in monthly precipitation for 10-year periods in the future under the SRES A2 scenario. All values are percentage anomalies relative to the mean climate of 1970-1999. See Figure 2 for details.

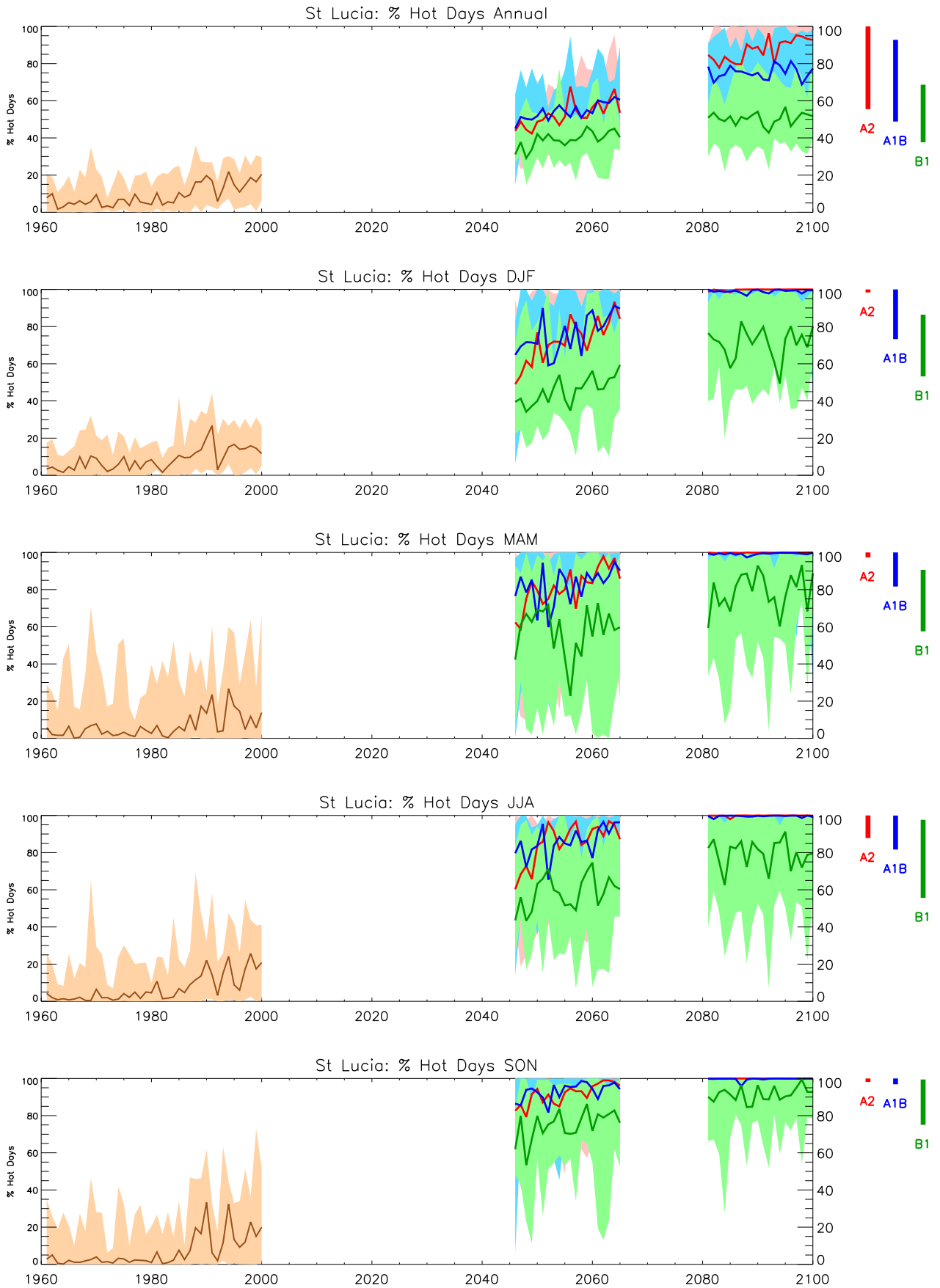


Figure 7: Trends in Hot-day frequency for the recent past and projected future. See Figure 1 for details.

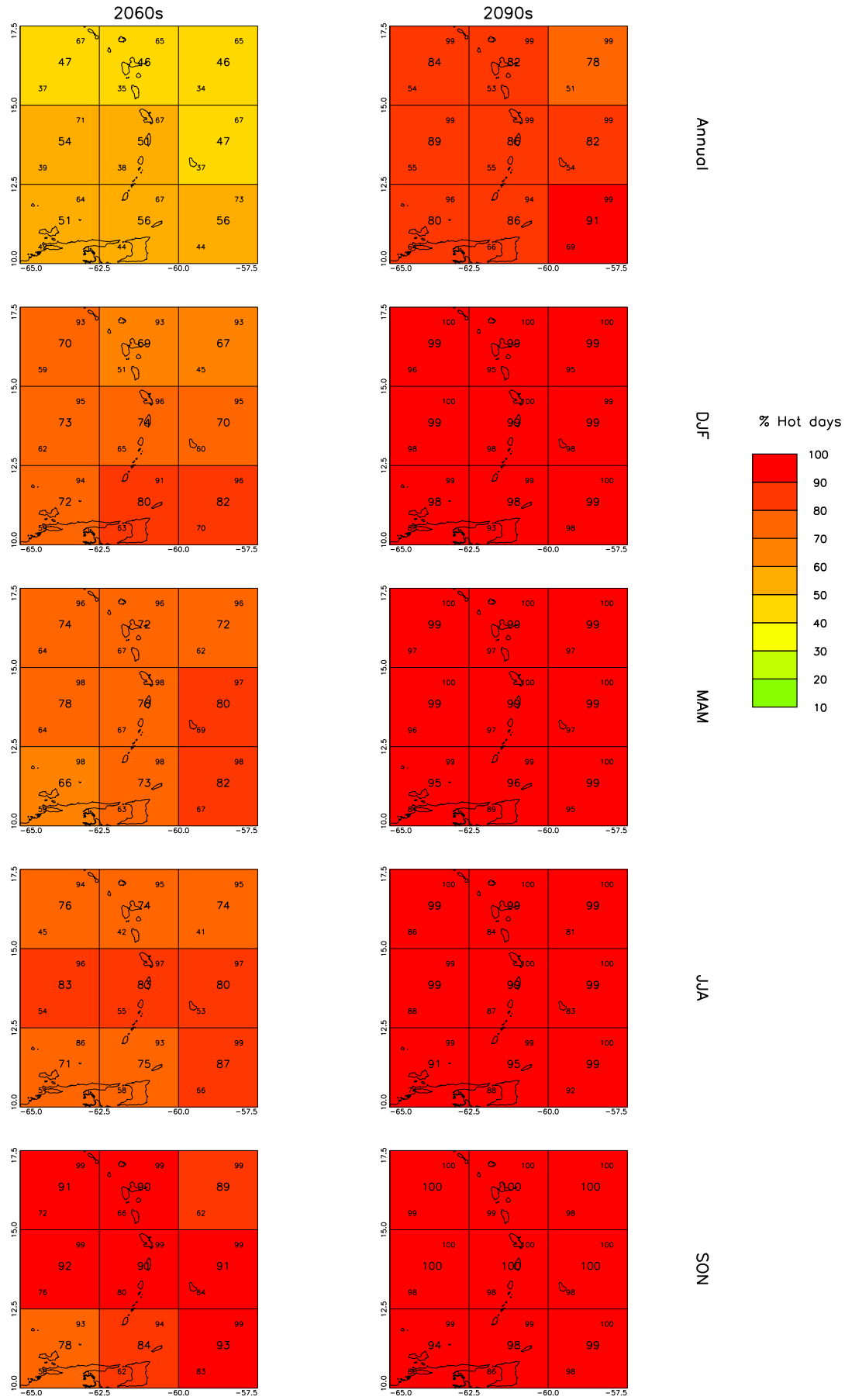


Figure 8: Spatial patterns of projected change in Hot-day frequency for 10-year periods in the future under the SRES A2 scenario. See Figure 2 for details.

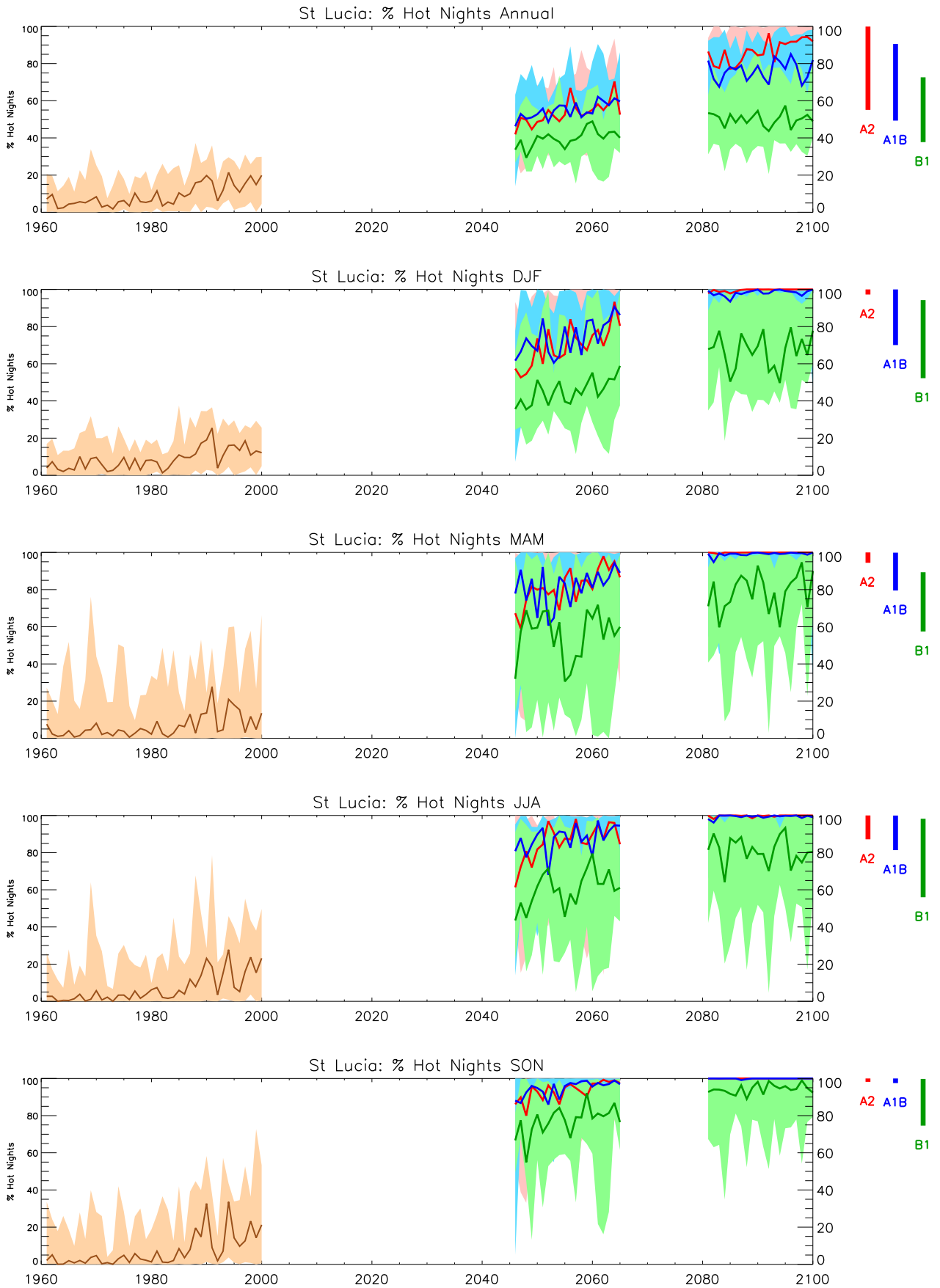


Figure 9: Trends in hot-night frequency for the recent past and projected future. See Figure 1 for details.

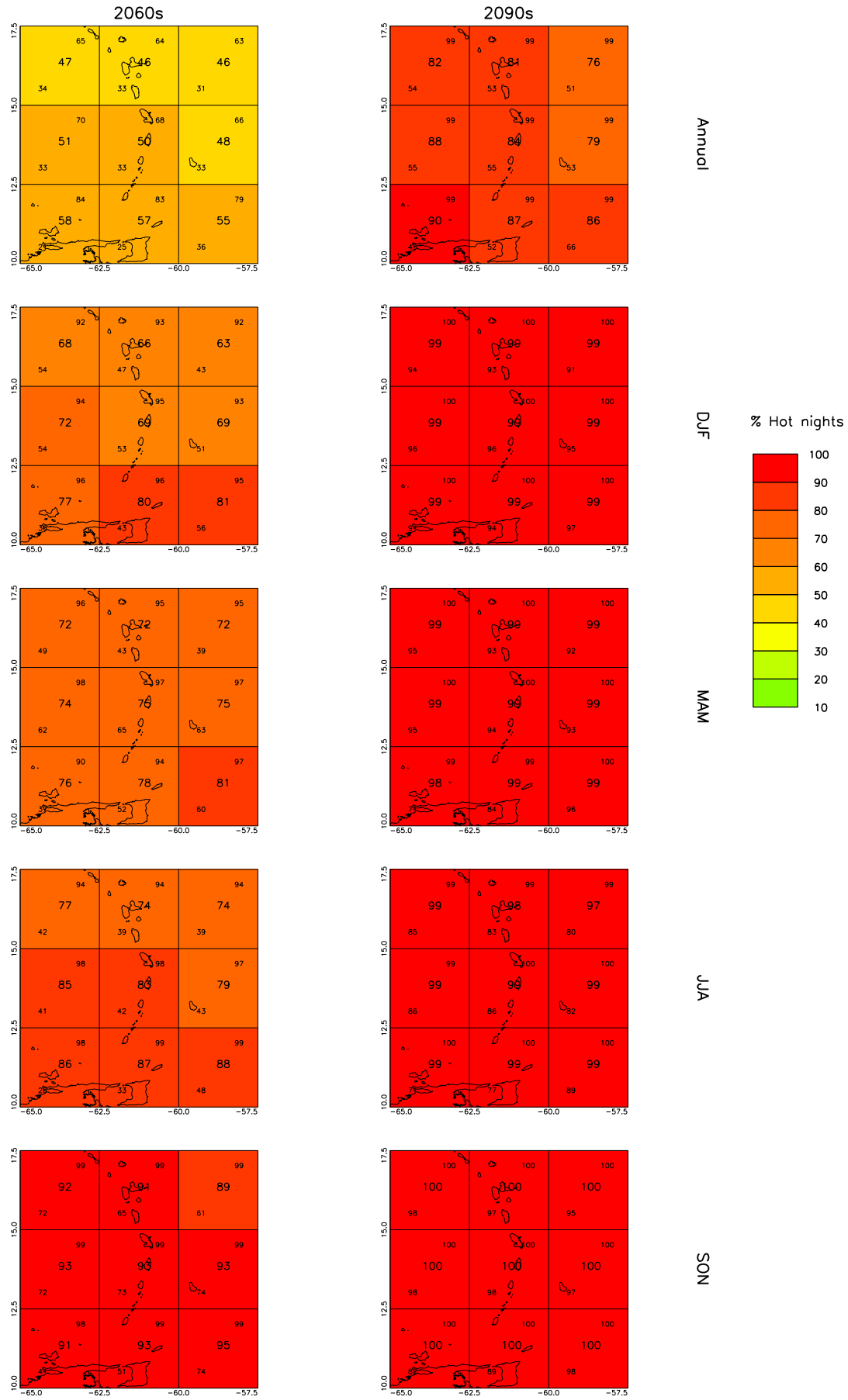


Figure 10: Spatial patterns of projected change in hot-night frequency for 10-year periods in the future under the SRES A2 scenario. See Figure 2 for details.

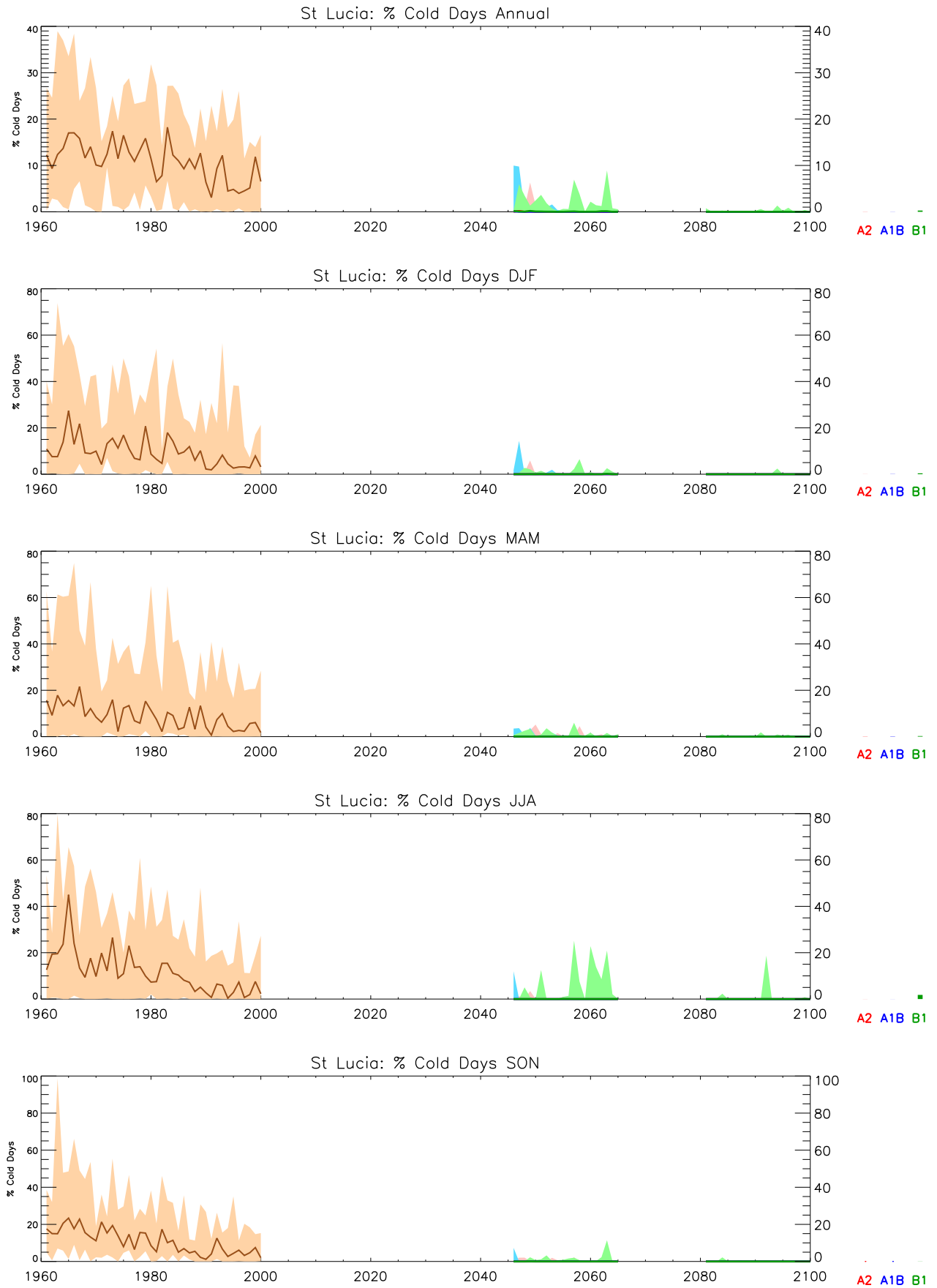


Figure 11: Trends in cold-day frequency for the recent past and projected future. See Figure 1 for details.

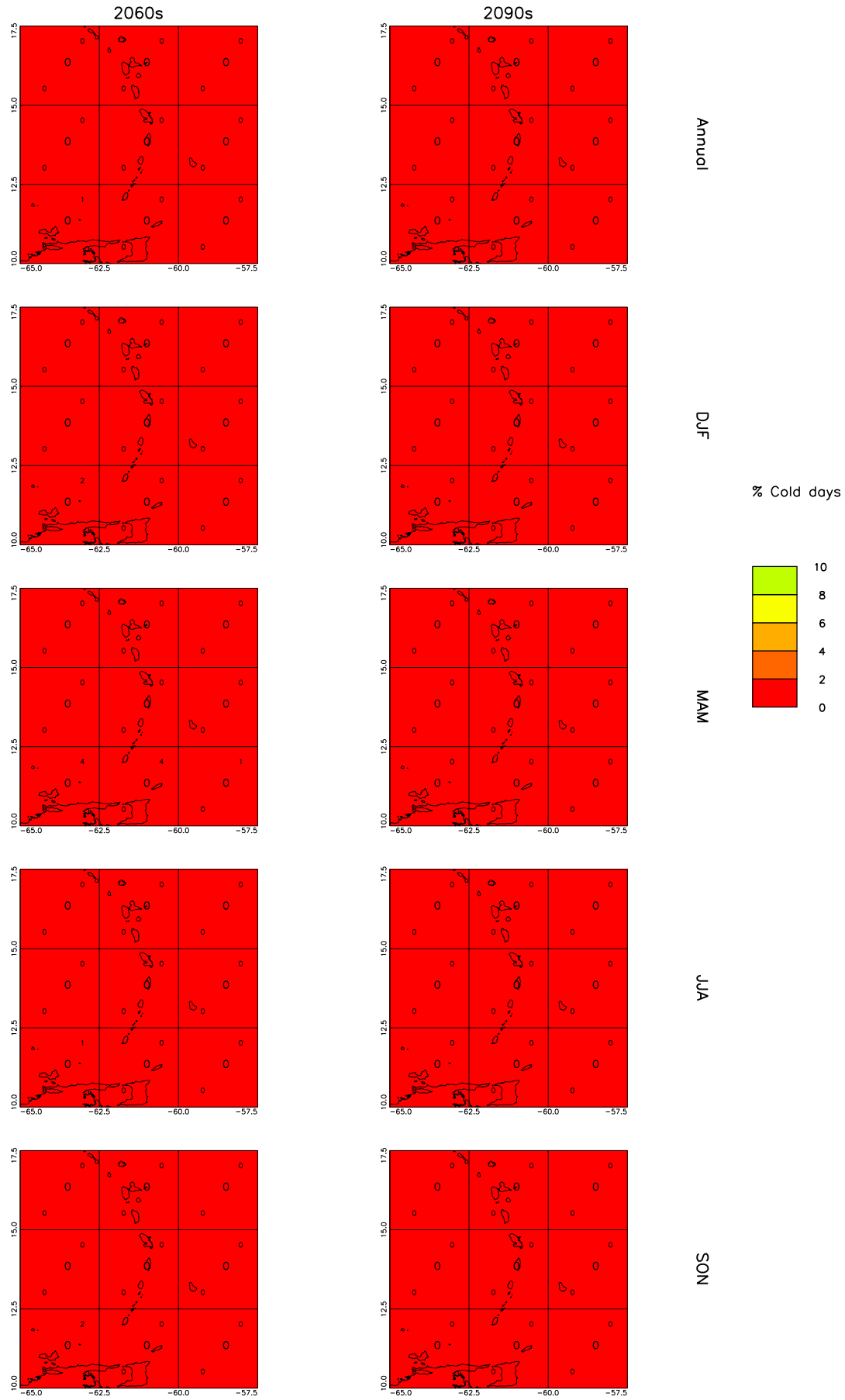


Figure 12: Spatial patterns of projected change in cold-day frequency for 10-year periods in the future under the SRES A2 scenario. See Figure 2 for details.

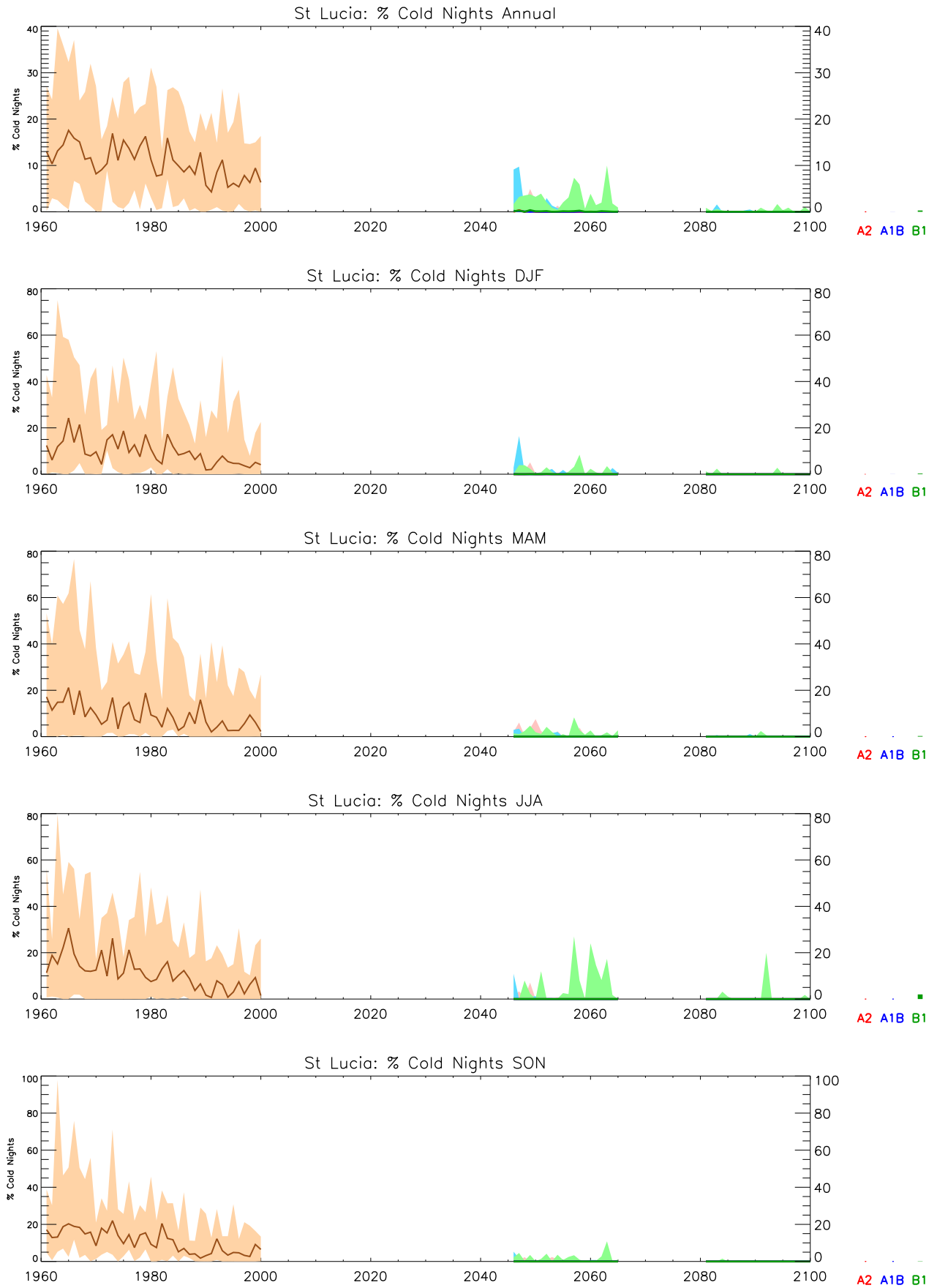


Figure 13: Trends in cold-night frequency for the recent past and projected future. See Figure 1 for details.

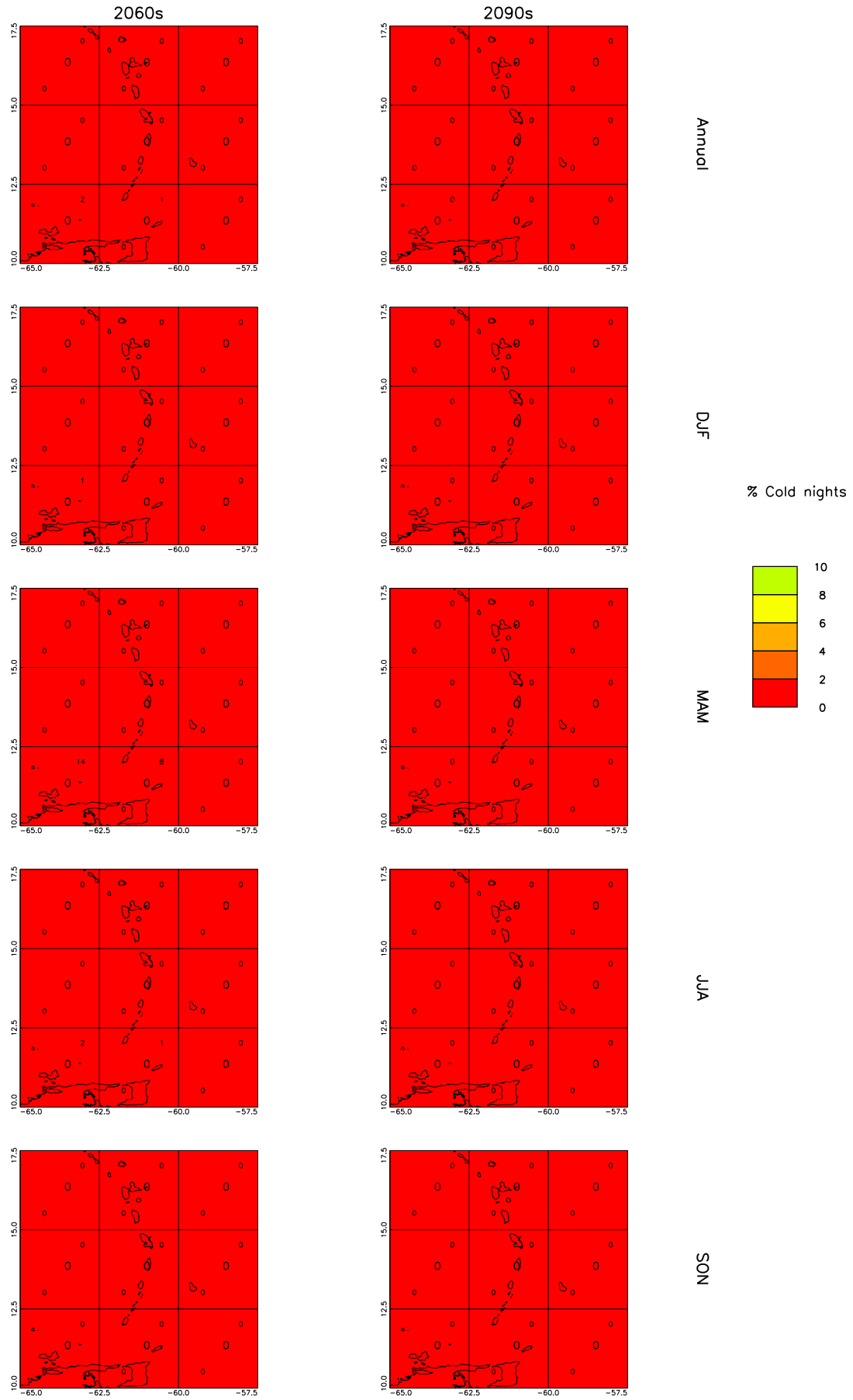


Figure 14: Spatial patterns of projected change in cold-night frequency for 10-year periods in the future under the SRES A2 scenario. See Figure 2 for details.

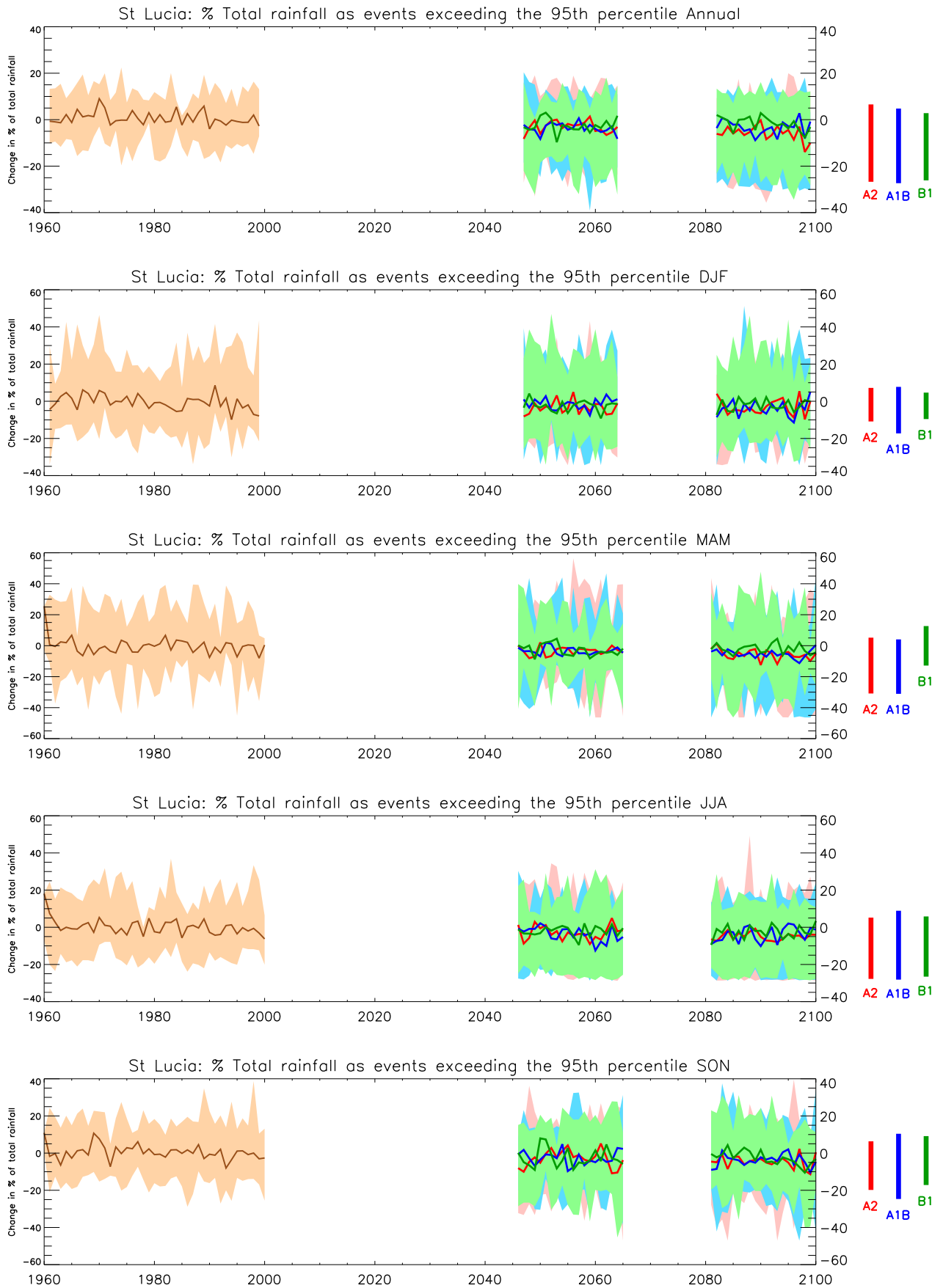


Figure 15: Trends in the proportion of precipitation falling in 'heavy' events for the recent past and projected future. All values shown are anomalies, relative to the 1970-1999 mean climate. See Figure 1 for details.

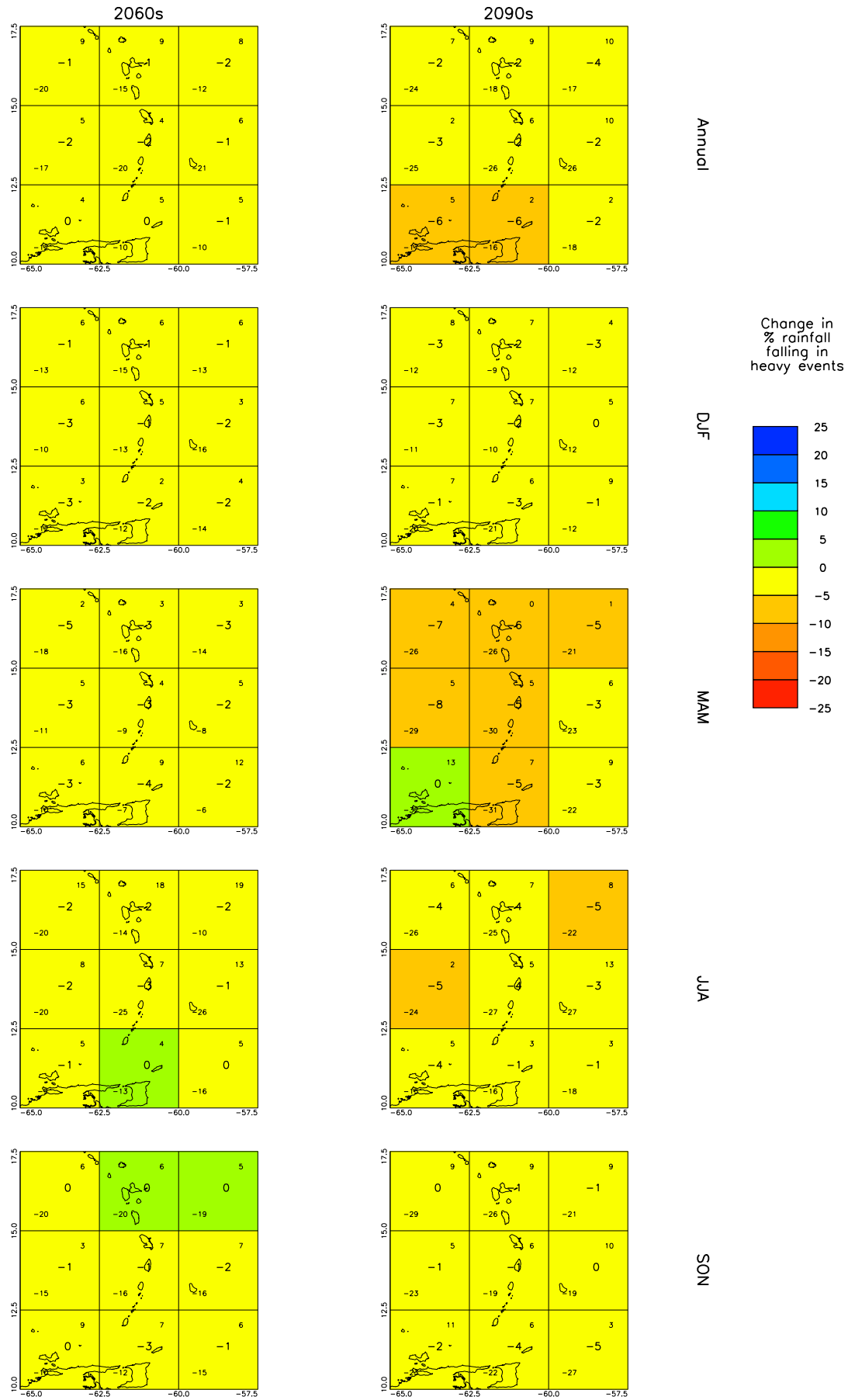


Figure 16: Spatial patterns of projected change in the proportion of precipitation falling in 'heavy' events for 10-year periods in the future under the SRES A2 scenario. All values are anomalies relative to the mean climate of 1970-1999. See Figure 2 for details.

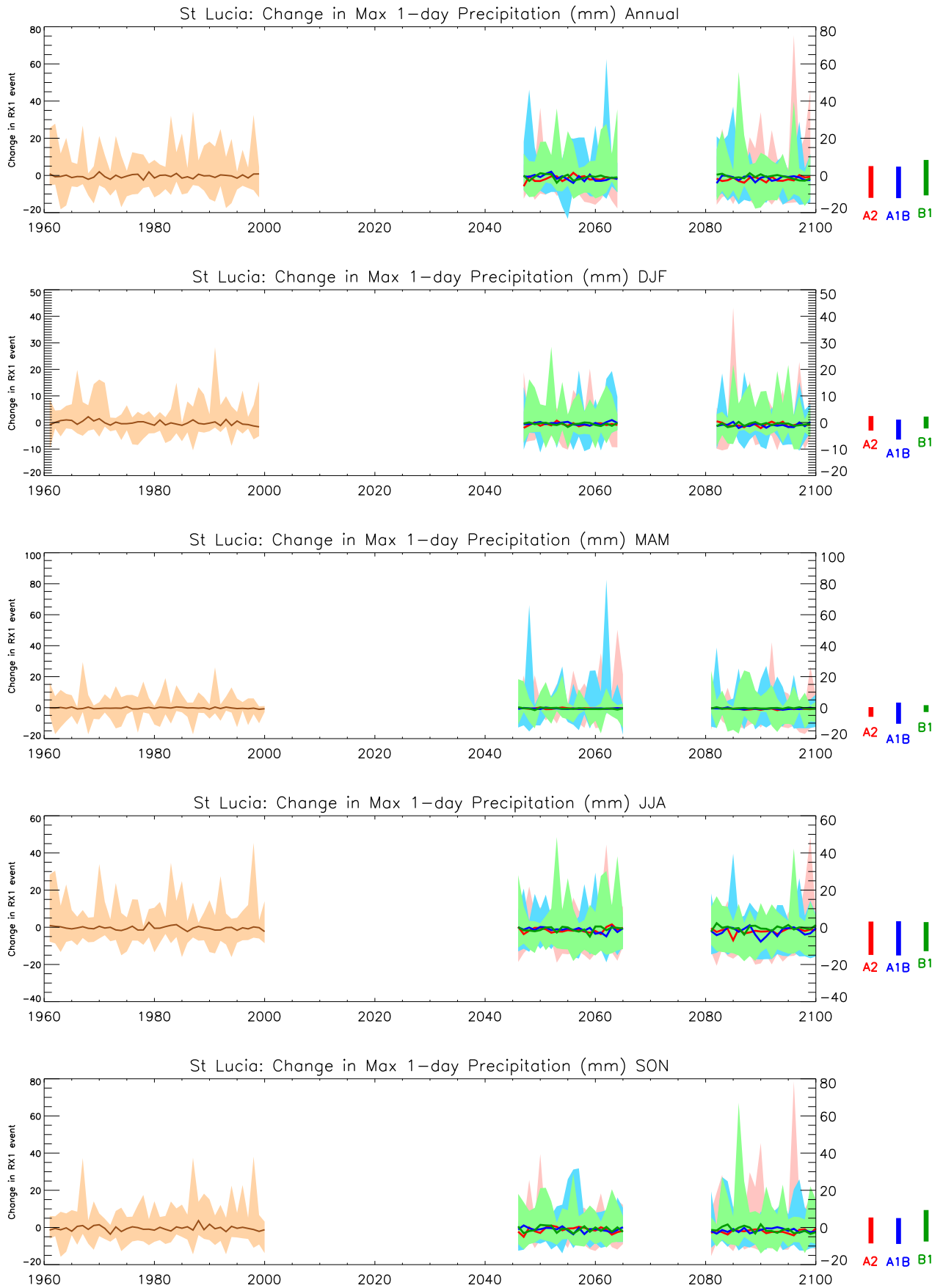


Figure 17: Trends in maximum 1-day rainfall for the recent past and projected future. All values shown are anomalies, relative to the 1970-1999 mean climate. See Figure 1 for details.

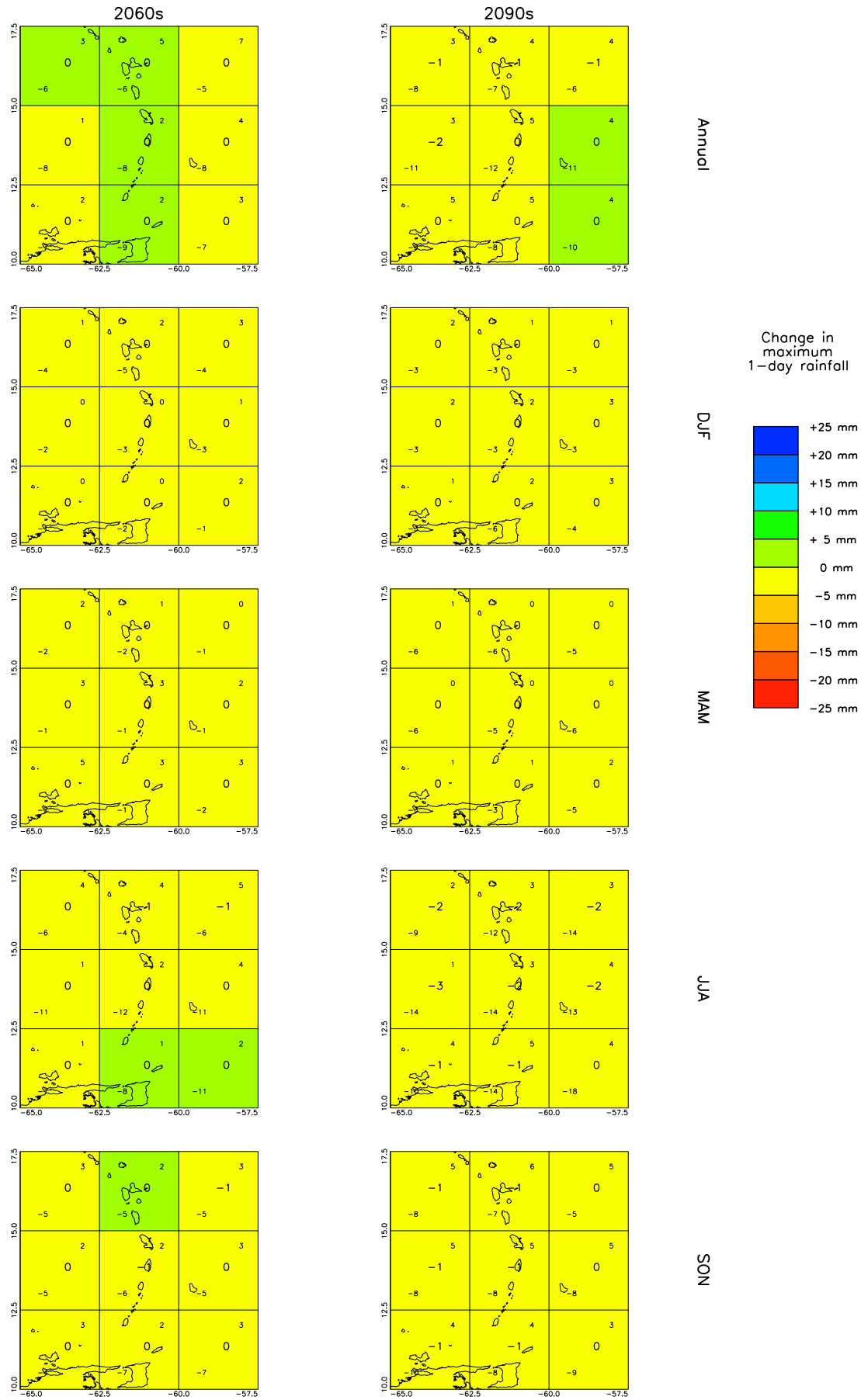


Figure 18: Spatial patterns of maximum 1-day rainfall for 10-year periods in the future under the SRES A2 scenario. All values are anomalies relative to the mean climate of 1970-1999. See Figure 2 for details.

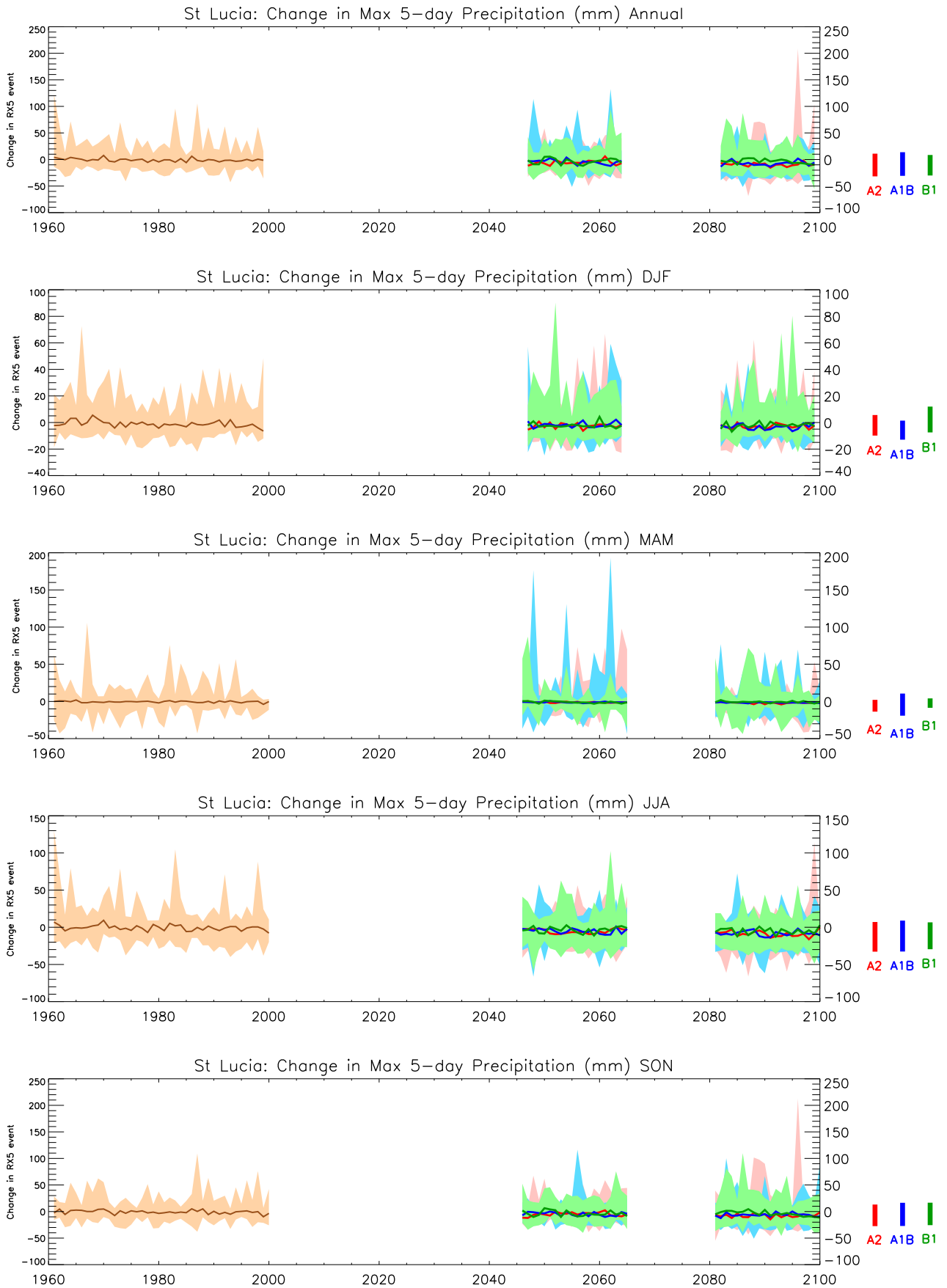


Figure 19: Trends in maximum 5-day rainfall for the recent past and projected future. All values shown are anomalies, relative to the 1970-1999 mean climate. See Figure 1 for details.

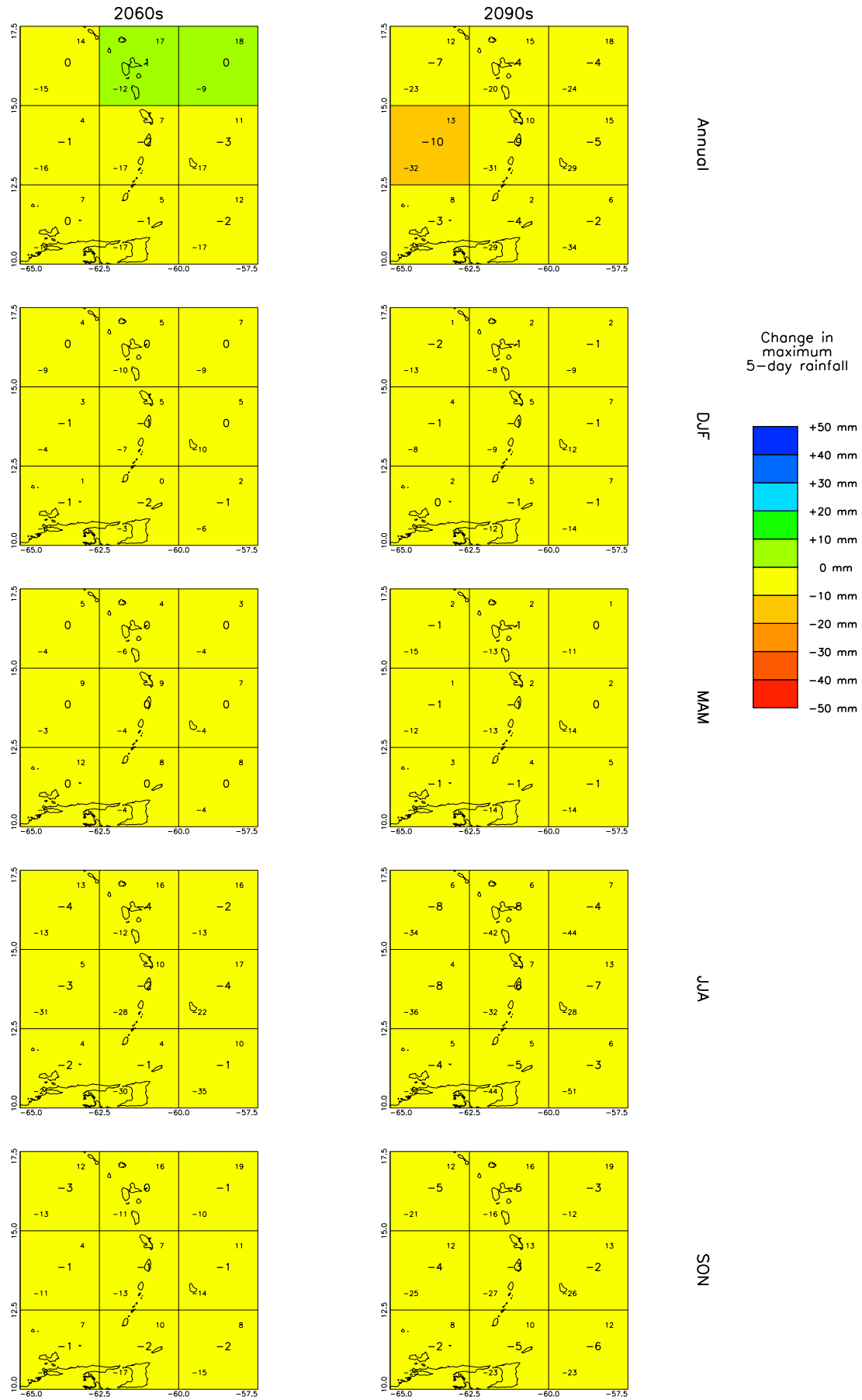


Figure 20: Spatial patterns of projected change in maximum 5-day rainfall for 10-year periods in the future under the SRES A2 scenario. All values are anomalies relative to the mean climate of 1970-1999. See Figure 2 for details.